



OneCall is a
division of
CraneCare



Free Phone 0800 652 4646

OneCall Solves it All

www.c1call.co.uk

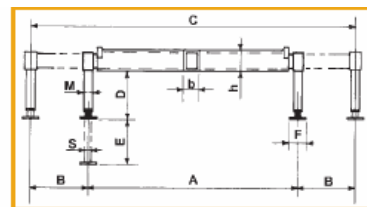
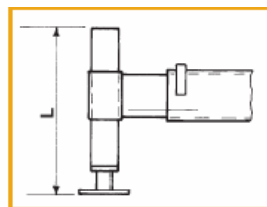
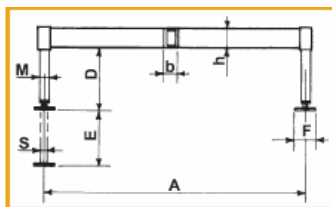
Email Sales@c1call.co.uk

Fax 0121 333 3996

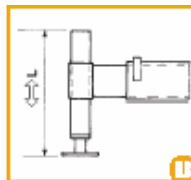
Stabilisers Datasheet

TIPO TYPE	GRU CRANE	Kg	A	B	C	hxb	D	E	F	M	S	I	RB	PS	GR	PR	KD
TRAVERSE FISSE – FIXED CROSS																	
JF 16/4	2 – 4	60	1600	-	-	120 x 80	390	330	150	70	40	550	□	●	●	●	●
JF 18/4	2 – 4	60	1800	-	-	120 x 80	390	330	150	70	40	550	□	●	●	●	●
JF 20/8	2 – 8	80	2000	-	-	120 x 80	450	400	150	70	40	630	□	●	●	●	●
JF 20/21	6 – 21	115	2000	-	-	180 x 100	520	450	150	85	50	710	□	●	●	●	●
JF 21/31	10 – 31	165	2100	-	-	200 x 100	640	550	200	95	60	800	□	●	●	●	●
JF 21/31S	10 – 31	160	2100	-	-	200 x 100	490	400	200	95	60	650	□	●	●	●	●
TRAVERSE ASTE OPPOSITE – OPPOSED CROSS ROD																	
JM 26/4	2 – 4	90	1600	500	2600	120 x 80	390	330	150	70	40	550	□	●	●	●	●
JM 28/4	2 – 4	90	1800	500	2800	120 x 80	390	330	150	70	40	550	□	●	●	●	●
JM 33/8	2 – 8	120	2000	650	3300	150 x 100	450	400	150	70	40	630	□	●	●	●	●
JM 33/21	6 – 21	180	2000	650	3300	200 x 100	520	450	150	85	60	710	□	●	●	●	●
JH 33/21	6 – 21	200	2000	650	3300	200 x 100	520	450	150	85	60	710	□	●	●	●	●
JM 33/31	10 – 31	235	2000	650	3300	200 x 120	640	550	200	95	60	800	□	●	●	●	●
JM 33/31S	10 – 31	230	2000	650	3300	200 x 120	490	400	200	95	60	650	□	●	●	●	●
JH 33/31	10 – 31	255	2000	650	3300	200 x 120	600	550	200	95	60	800	□	●	●	●	●
JH 33/31S	10 – 31	250	2000	650	3300	200 x 120	450	400	200	95	60	650	□	●	●	●	●
TRAVERSE ASTE PARALLELE – PARALLEL ROD CROSS																	
JM 44/21	6 – 21	190	2000	1200	4400	200 x 200	520	450	150	85	50	710	□	●	●	●	●
JH 44/21	6 – 21	330	2000	1200	4400	200 x 200	520	450	150	85	60	710	□	●	●	●	●
JM 47/31	10 – 31	340	2000	1350	4700	200 x 235	640	550	200	95	60	800	□	●	●	●	●
JM 47/31S	10 – 31	330	2000	1350	4700	200 x 235	490	400	200	95	60	650	□	●	●	●	●
JH 47/31	10 – 31	360	2000	1350	4700	200 x 235	600	550	200	95	60	800	□	●	●	●	●
JH 47/31S	10 – 31	370	2000	1350	4700	200 x 235	490	400	200	95	60	650	□	●	●	●	●
JM 50/33	20 – 33	430	2000	1500	5000	250 x 235	590	550	200	95	60	840	□	□	●	●	●
JH 50/33S	20 – 33	420	2000	1500	5000	250 x 235	400	400	200	95	60	710	□	□	●	●	●
JM 50/50	30 – 50	530	2000	1500	5000	300 x 235	650	650	200	105	70	970	□	□	●	●	●
JH 50/50S	30 – 50	515	2000	1500	5000	300 x 235	520	500	200	105	70	820	□	□	●	●	●
JM 59/70	40 – 70	800	2200	1850	5900	320 x 320	660	600	200	125	90	-	□	□	●	●	●
JH 59/70S	40 – 70	700	2200	1850	5900	320 x 320	405	450	200	125	90	820	□	□	●	●	●
JH 69/80	50 – 80	980	2300	2300	6900	320 x 350	550						□	□	●	●	●
JH 69/80S	50 – 80	900	2300	2300	6900	320 x 350	400						□	□	●	●	●
JH 69/100	70 – 100	1070	2300	2300	6900	340 x 340	660	600	200	125	90	-	□	□	●	●	●
JH 69/100S	70 – 100	1050	2300	2300	6900	340 x 340	510	450	200	125	90	820	□	□	●	●	●
JH71/120	90 – 120	1290	2100	2500	7100	311 x 337	677	610	200	146	115	-	□	□	●	●	●
JH71/120S	90 – 120	1290	2100	2500	7100	311 x 337	626	185	200	146	115	820	□	□	●	●	●

M = Manual Extension H = Hydraulic Extension ● = Option □ = Standard



Standard



Optional

