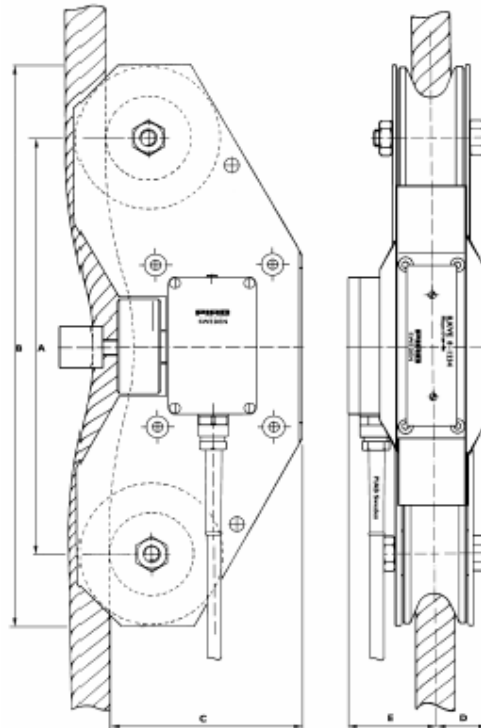


## LKVE Overload Guard Datasheet

The PIAB LKVE is intended for use as an overload guard and/or a slack line switch in lifting equipment and is made in a range for forces up to 35000 lb. (16000 kp) in single line part and for max. 1.3/4" (44 mm) line diameter. The PIAB LKVE provides load indication and/or sums two or more lifts.



The drawing is for an LKVE 1-4. The other types are of a slightly different design.

TYPE	MAX. SWITCH VALUE IN LB. (KG)	FOR WIRE DIMENSION Ø IN INCHES AND (MM)	DEADWEIGHT IN LB. (KG)	DIMENSIONS IN INCHES AND (MM)				
				A	B	C	D	E
LKVE 1	2200 (1000)	3/16- 5/16 (5-8)	10 (5)	7.8740 (200)	10.7087 (272)	4.8031 (122)	1.1024 (28)	2.1654 (55)
LKVE 2	4400 (2000)	5/16- 15/32 (8-12)						
LKVE 4	8800 (4000)	15/32- 5/8 (12-16) 5/8- 25/32 (16-20)						
LKVE 8	17600 (8000)	5/8- 25/32 (16-20) 25/32- 15/16 (20-24)	26 (12)	11.8110 (300)	15.9843 (406)	5.5118 (140)	1.5354 (39)	2.4803 (63)
LKVE 12	26000 (12000)	15/16- 1.7/64 (24-28) 1.7/64- 1.1/4 (28-32) 1.1/4-1.27/64 (32-36)						
LKVE 16	35000 (16000)	1.1/4-1.27/64 (32-36) 1.27/64-1.1/2 (36-40) 1.1/2-1.3/4 (40-44)	48 (21)	18.8976 (480)	23.6220 (600)	5.7087 (145)	2.7559 (70)	2.7559 (70)